

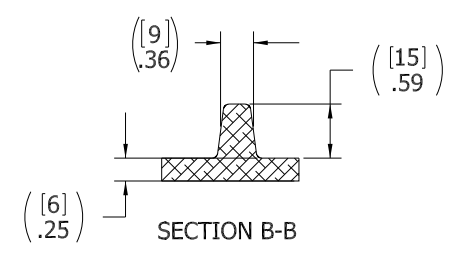
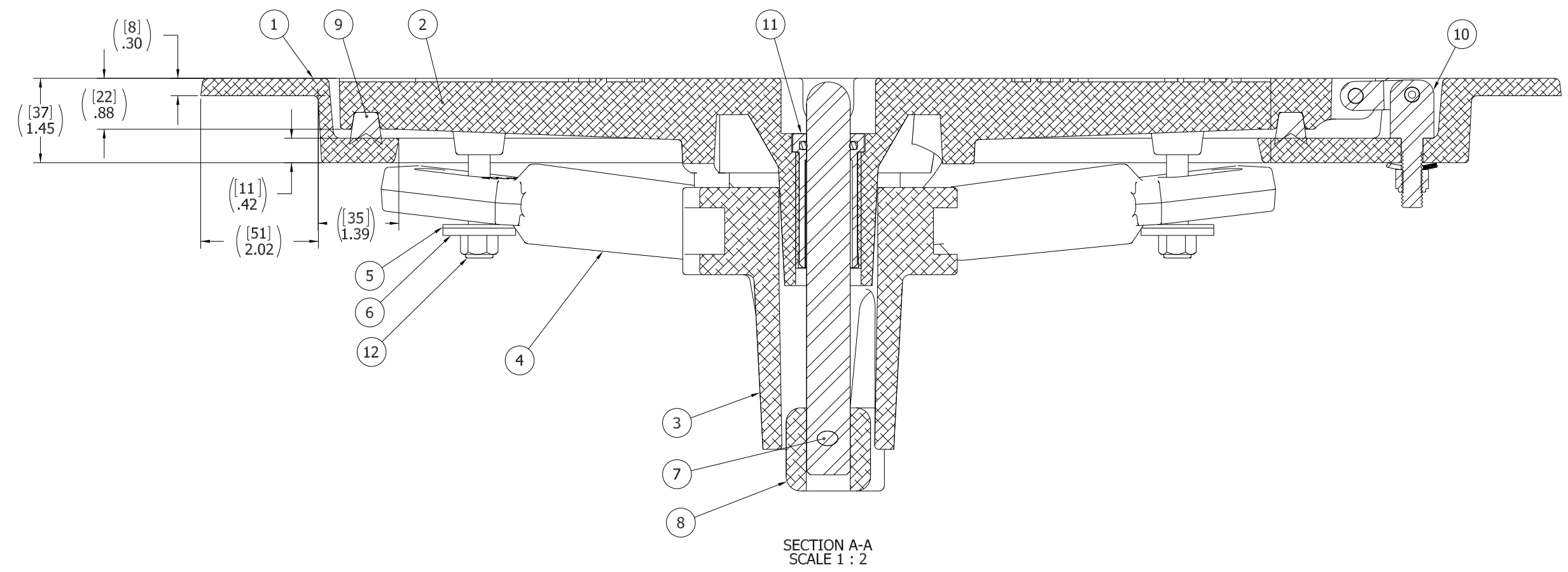
- 11. FINISH - COVER: BARE METAL, AS MANUFACTURED.  
FINISH - COAMING: BARE METAL, AS MANUFACTURED.
- 10. FOR SPECIFIC INFORMATION CONTACT SALES.
- 9. COMPLETE ASSEMBLY WEIGHT W/ DECK RING, 37.3LBS/ 16.9K.
- 8. DOGGING PRESSURE FULLY ADJUSTABLE.
- 7. HANDLE POSITION TOPSIDE INDICATES WHETHER DOGGING MECHANISM IS IN OPEN OR CLOSED POSITION.
- 6. ALUMINUM ALLOY MECHANISM SHOWN.
- 5. FLUSH, WATERTIGHT CONSTRUCTION.
- 4. INTEGRAL TOPSIDE "T" HANDLE STANDARD, OTHER TOPSIDE ACTUATION AVAILABLE.
- 3. CAST ALUMINUM ALLOY FLANGE, FLANGE CAN BE DRILLED FOR BOLTED INSTALLATIONS OR WELDED TO ALUMINUM.
- 2. QUICK-ACTING, MECHANISM ENGAGES OR DISENGAGES IN QUARTER-TURN OF CENTER SPINDLE.
- 1. 14.8" x 23.8" CLEAR OPENING, ALL DIMENSIONS SHOWN SUBJECT TO CASTING VARIATION AND ARE REFERENCE ONLY.

NOTES: UNLESS OTHERWISE SPECIFIED.

SPECIFICATIONS SUBJECT TO CHANGE WITHOUT NOTICE.		<b>FREEMAN</b> MARINE EQUIPMENT, INC.		28336 HUNTER CREEK ROAD GOLD BEACH, OR 97444 U.S.A. PHONE: 541-247-7078 FAX: 541-247-2114 www.freemanmarine.com	
PROJECTION		<small>CONFIDENTIAL PROPERTY OF FREEMAN MARINE EQUIPMENT, INC. UNLESS OTHERWISE SPECIFIED OR OTHERWISE INDICATED, ALL RIGHTS ARE RESERVED. THIS DOCUMENT IS THE PROPERTY OF FREEMAN MARINE EQUIPMENT, INC. AND SHALL REMAIN THE PROPERTY OF FREEMAN MARINE EQUIPMENT, INC. IF IT IS REPRODUCED OR TRANSMITTED IN ANY FORM OR BY ANY MEANS, ELECTRONIC OR MECHANICAL, INCLUDING PHOTOCOPYING, RECORDING, OR BY ANY INFORMATION STORAGE AND RETRIEVAL SYSTEM.</small>		CLIENT: <b>FREEMAN MARINE EQUIPMENT, INC.</b>	
UNLESS OTHERWISE SPECIFIED DIMENSIONS ARE IN INCHES. TOLERANCES FOR ROUGH AND CLEAR OPENINGS: .125 INCH. ALL OTHERS ARE:		DRAWN: MK FURMAN DATE: 25JUL05 CHECKED: D. YOES DATE: 23FEB12 ENGR: DATE: DESIGN ACTIVITY: DATE: CONTRACT NO.:		TITLE: <b>HATCH: 1524-H, AL COVER, AL RING</b>	
.X .XX .XXX ANGLES ±.1 ±.03 ±.010 ±2°		DO NOT SCALE DRAWING		SIZE: <b>D</b> CAGE CODE: <b>64747</b> DRAWING NUMBER: <b>2473-0002</b> REV. <b>B</b>	
- INITIAL RELEASE 25JUL05 MKF A UPDATE GEN. NOTES & B.O.M. 04NOV11 PPC B RE-ATTACH DIMENSIONS; B.O.M. ITEMS TO MATCH VISUAL 23FEB12 RR		SCALE: 1:3 CALC. WT. ACT. WT.		SHEET 1 OF 3	

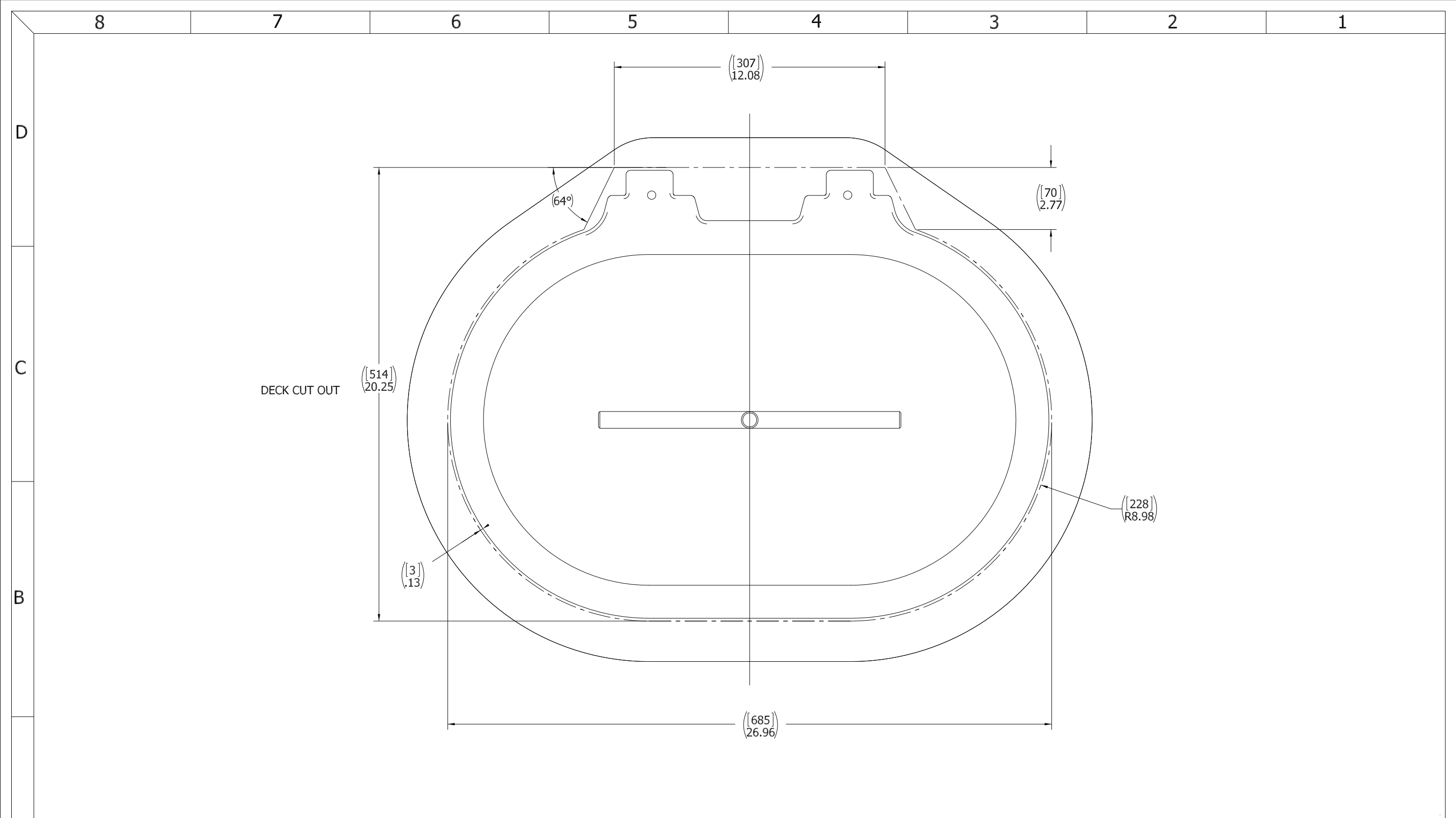
8 7 6 5 4 3 2 1

D  
C  
B  
A



ITEM NO.	QTY.	PART NUMBER	DESCRIPTION	MATERIAL
13	1	0021-2005	HANDLE, S/S, ROUND BAR	STAINLESS STEEL, 316
12	4	0411-2032	NUT .375IN-16 SS 316 NYLOCK	SS 316/316L
11	1	0031-2058	BUSHING ASSY, W/O-RING, NO SLEEVE	ACETRON/RUBBER
10	2	0461-2205	HINGE ASSY, DOUBLE-ACTING, CAST HATCH,2	REF S/A - B.O.M.
9	1	9801-2005	GASKET: 1524 (5.58 FT. OF 0631-9801)	NEOPRENE
8	1	0112-2001	ACTUATOR, AL	ALUMINUM, 535
7	1	0411-2004	PIN KNURLED .25 X 2.25IN SS 316	SS 316/316L
6	4	0411-2033	WASHER .406 X 1.25 X .125IN SS 316	SS 316/316L
5	4	0413-2005	WASHER, .406 X 1.250 X .062 NYLON	NYLON
4	4	0211-2004	DOG, LOCKING ARM 1524, AL	ALUMINUM, 535.2-F
3	1	0011-2002	HUB, AL, 4 HOLE	ALUMINUM, 535.2-F
2	1	2473-3001	COVER: 1524-H ALUM, FINISHED CASTING	REF. S/A - B.O.M.
1	1	2473-1002	RING: 1524-H ALUM	ALUMINUM, A356

SPECIFICATIONS SUBJECT TO CHANGE WITHOUT NOTICE.		<b>FREEMAN MARINE EQUIPMENT, INC.</b> 28336 HUNTER CREEK ROAD GOLD BEACH, OR 97444 U.S.A. PHONE: 541-247-7078 FAX: 541-247-2114 www.freemanmarine.com	
PROJECTION		CLIENT: FREEMAN MARINE EQUIPMENT, INC.	
UNLESS OTHERWISE SPECIFIED DIMENSIONS ARE IN INCHES. TOLERANCES FOR ROUGH AND CLEAR OPENINGS: .125 INCH. ALL OTHERS ARE:		TITLE: HATCH: 1524-H, AL COVER, AL RING	
.X .XX .XXX ANGLES ±.1 ±.03 ±.010 ±2°		SIZE: D 64747	
DO NOT SCALE DRAWING		DRAWING NUMBER: 2473-0002	
- INITIAL RELEASE 25JUL05 MKF		SCALE: 1:1	
A UPDATE GEN. NOTES & B.O.M. 04NOV11 PPC		CALC. WT.	
B RE-ATTACH DIMENSIONS; B.O.M. ITEMS TO MATCH VISUAL 23FEB12 RR		ACT. WT.	
REV. DESCRIPTION: DATE: DRAWN		SHEET 2 OF 3	



DECK CUT OUT

- 3. FINISH: 125 RMS MAX.
  - 2. BREAK SHARP EDGES AND DEBURR.
  - 1. MATERIAL: REF. S/A - B.O.M.
- NOTES: UNLESS OTHERWISE SPECIFIED.

CUSTOMER APPROVAL

Signature: \_\_\_\_\_  
 Date: \_\_\_\_\_

IMPORTANT! THIS DRAWING SUPERSEDES ALL OTHER DOCUMENTS. By signing this approval you accept and agree that the dimensions and details shown are correct and properly fit your application, regardless of any differences between this drawing and any contract specifications. Should you see any errors in the drawing, or have any questions, please contact your Freeman Marine sales engineer for clarification.

REV.	DESCRIPTION	DATE	DRAWN
-	INITIAL RELEASE	25JUL05	MKF
A	UPDATE GEN. NOTES & B.O.M.	04NOV11	PPC
B	RE-ATTACH DIMENSIONS; B.O.M. ITEMS TO MATCH VISUAL	23FEB12	RR

SPECIFICATIONS SUBJECT TO CHANGE WITHOUT NOTICE.

PROJECTION

UNLESS OTHERWISE SPECIFIED DIMENSIONS ARE IN INCHES. TOLERANCES FOR ROUGH AND CLEAR OPENINGS: .125 INCH. ALL OTHERS ARE:  
 .X .XX .XXX ANGLES  
 ±.1 ±.03 ±.010 ±2°

DO NOT SCALE DRAWING

<b>FREEMAN MARINE EQUIPMENT, INC.</b> <small>CONFIDENTIAL PROPERTY OF FREEMAN MARINE EQUIPMENT, INC. UNLESS OTHERWISE SPECIFIED. ALL RIGHTS RESERVED. THIS DRAWING IS THE PROPERTY OF FREEMAN MARINE EQUIPMENT, INC. AND SHALL BE RETURNED UPON REQUEST.</small>		28336 HUNTER CREEK ROAD GOLD BEACH, OR 97444 U.S.A. PHONE: 541-247-7078 FAX: 541-247-2114 www.freemanmarine.com	
		CLIENT: <b>FREEMAN MARINE EQUIPMENT, INC.</b>	
DRAWN: MK FURMAN DATE: 25JUL05 CHECKED: D. YOES DATE: 23FEB12 ENGR: DATE: DESIGN ACTIVITY: DATE:		TITLE: <b>HATCH: 1524-H, AL COVER, AL RING</b>	
SIZE: <b>D</b>	CAGE CODE: <b>64747</b>	DRAWING NUMBER: <b>2473-0002</b>	REV. <b>B</b>
SCALE: 1:2	CALC. WT.	ACT. WT.	SHEET 3 OF 3